

**Zirkonzahn®**

*Human Zirconium Technology*

I.P.



## **TITANIUM BASES K80 ANGLED SCREW CHANNEL**

*The Zirkonzahn Culture*

## TITANIUM BASES K80 ANGLED SCREW CHANNEL (ASC)

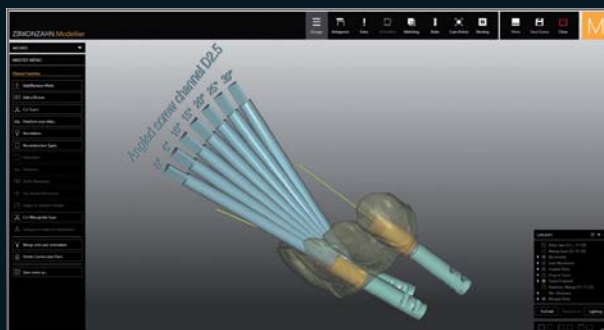
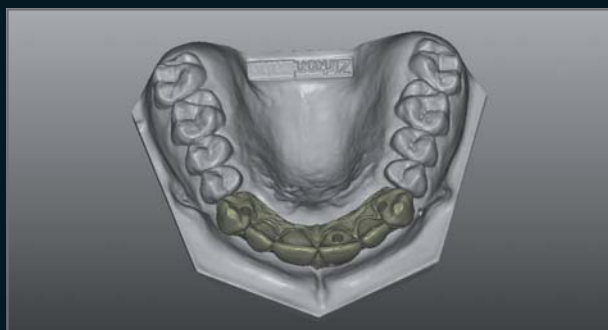
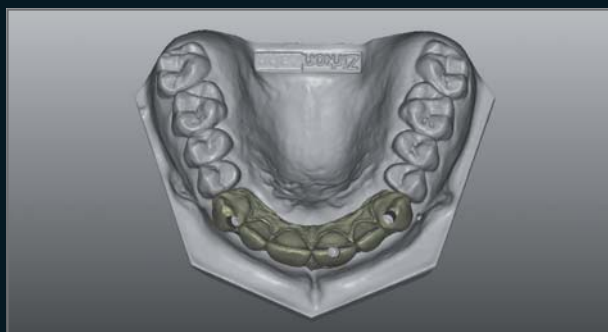
*The Titanium Bases K80 Angled Screw Channel combine two advantages in one: on the one hand, the adjustable chimney height ensures optimal stability and force distribution. On the other hand, the side opening permits the tilting of the screw access channel from 0° to 30° in order to compensate for non-optimal implant positions. These new bases are also provided with cut-off marks on the chimney, which are useful to adjust the height and, at the same time, increase the contact area, ensuring optimal cement adhesion.*

*Depending on their use, they are available with or without anti-rotation connection. Furthermore, the additional anti-rotation device on the chimney prevents the cemented restoration from twisting.*

*Especially in the anterior region, the use of standard titanium bases in case of divergent implants could lead to non-aesthetic results due to the vestibular protrusion of the screw channels. With the new titanium bases K80 Angled Screw Channel (ASC) it is possible to tilt the screw access channel up to 30° in order to compensate for non-favourable implant positions and avoid a vestibular protrusion of the screw channels, improving the aesthetics of the final restoration.*

*All titanium bases from Zirkonzahn are also available in a high-quality gold plating, which increases the biocompatibility and reduces the grey value of the entire restoration. Alternatively, the titanium bases can also be anodised in different colours using the Titanium spectral-colouring Anodizer.*

*The titanium bases K80 Angled Screw Channel (ASC) are best suited for cemented restorations.*



# 100% AESTHETIC – THANKS TO INTELLIGENT SOLUTIONS

CONICAL TITANIUM BASES NON HEX



TITANIUM BASES NON HEX K80  
ANGLED SCREW CHANNEL (ASC)





## TITANIUM BASES K80 ANGLED SCREW CHANNEL (ASC)



### TITANIUM BASE NON HEX K80 ANGLED SCREW CHANNEL (ASC)

- For multi-unit restorations



For the titanium bases K80 Angled Screw Channel (ASC), the Screwdriver Ball-Head was especially conceived in three different lengths

### TITANIUM BASE HEX K80 ANGLED SCREW CHANNEL (ASC)

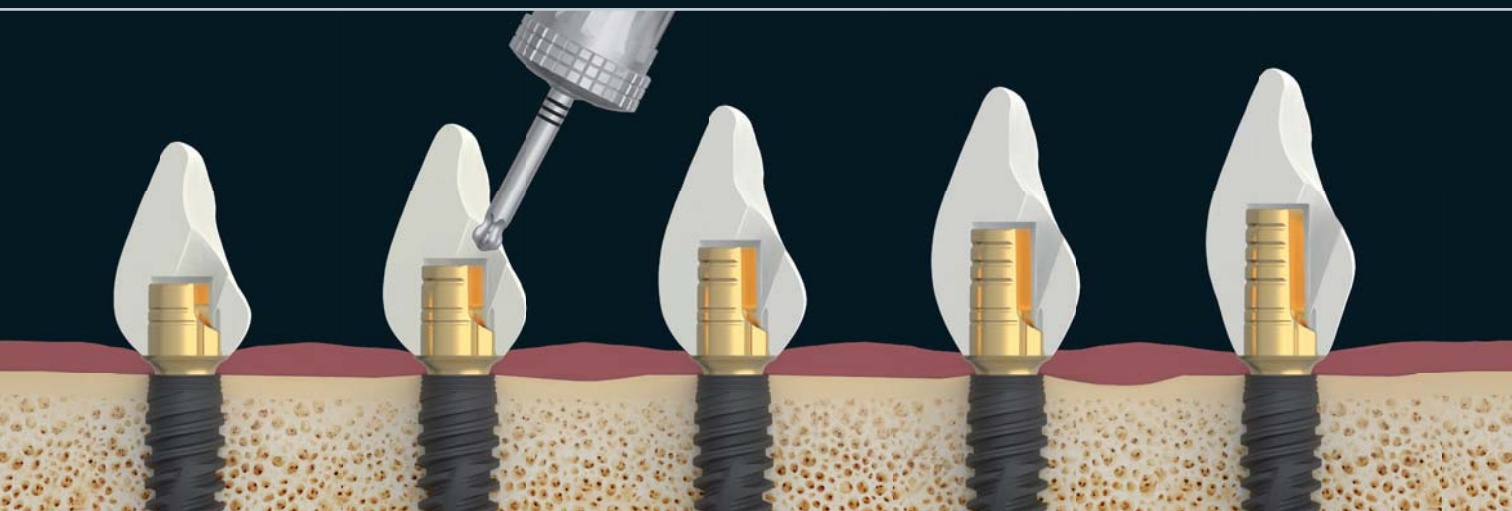
- For single crowns



- Available with or without anti-rotation connection and with an additional anti-rotation device located on the chimney as well as cut-off marks to modify the height
- Available also gold-plated, to increase biocompatibility and reduce the grey value of the restoration.
- Side opening to tilt the screw access channel from 0°-30° and to compensate for non-optimal implant positions
- The chimney height can be adjusted to tooth length

## HUMAN ZIRCONIUM TECHNOLOGY

Zirkonzahn Worldwide – Tel +39 0474 066 680 – [info@zirkonzahn.com](mailto:info@zirkonzahn.com) – [www.zirkonzahn.com](http://www.zirkonzahn.com)



WEAB3544EN=

This is an international advertisement. Not all of the products mentioned are available in all countries. The product's field of application may vary depending on the country. Please contact your sales team for more information. All information is subject to change. Errors and omissions excepted. Version: 24/02/2022